

HOSHIZAKI

AM-50BAE(-AD)
Item # 13158 8/03

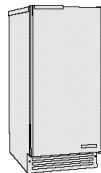
AM-50BAE(-AD) SERIES

SELF-CONTAINED CUBER WITH BUILT-IN STORAGE BIN

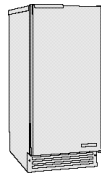
AM-50BAE
Air-Cooled
AM-50BAE-AD*
Air-Cooled
*ADA Compliant unit



AM-50BAE



AM-50BAE



AM-50BAE-AD

DIMENSION

Width x Depth x Height

AM-50BAE

14 7/8 x 22 5/8 x 33 1/2

AM-50BAE-AD

14 7/8 x 22 5/8 x 31 1/2

AM-50BAE

- Undercounter design is less than 34 inches tall

AM-50BAE-AD

- Undercounter design is less than 32 inches tall, which complies with the Americans with Disabilities Act (ADA)

AM-50BAE & AM-50BAE-AD

- Up to 55 lbs. of ice production per 24 hours
- Durable stainless steel exterior
- UL approval for outdoor use
- Up to 27 lbs. of built-in storage capacity
- Power switch accessible without panel removal
- Easily disassembled water circuit for easy cleaning
- Front in, front out airflow
- Fewer moving parts for longer life
- Swing style reversible door
- Optional drain pump



Open cell evaporator

© HOSHIZAKI AMERICA, INC.

618 Hwy. 74 S., Peachtree City, GA30269

TEL1-800-438-6087

FAX 1-800-345-1325

www.hoshizaki.com



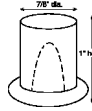
Reliability is a beautiful thing™

AM-50BAE(-AD) SERIES

DIMENSIONS (Inches) - CONNECTIONS

SELF-CONTAINED CUBER WITH BUILT-IN STORAGE BIN

AM-50BAE (AIR-COOLED)
 AM-50BAE-AD (AIR-COOLED)



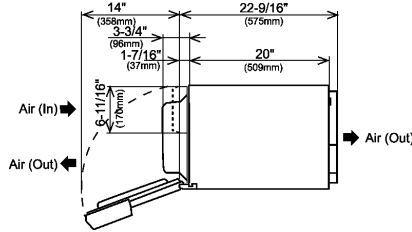
- AM-50BAE(-AD) - Up to 55 lbs. of ice production per 24 hours
- Up to 27 lbs. of built-in storage capacity



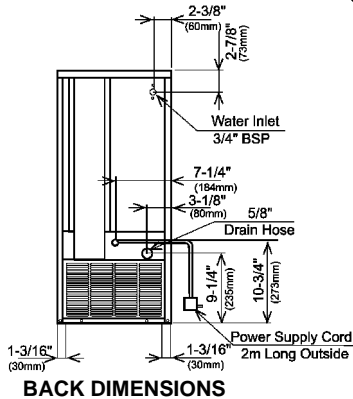
WARRANTY TWOYEAR - Parts & Labor on entire machine.		R-134A REFRIGERANT				
Warranty valid in United States, Canada, Puerto Rico, & U.S. Territories. Contact Factory for Warranty in other Countries.						
STORAGE BINS Up to 27 lb. Capacity Built-in Bin		UTILITY CONSUMPTION				
OPERATING LIMITS Ambient Temp Range 45 - 100°F Water Temp Range 45 - 95°F Voltage Range 104 - 127V Water Pressure 7 - 113 psig		ELECTRICAL & PLUMBING 115/60/1 15 amp Max Fuse 3/4" BSP Requires 3/8" Flare fitting (Included)				
AIR - COOLED		Model Number	Ice Production Per Cycle Lbs. Cubes	KWH per 100 lbs.	Potable Water Gallons per 100 lbs.	Condenser Water Gallons per 100 lbs.
Water Temp° F. - 50° Air Temp° F. - 70°		AM-50BAE(-AD)	0.64 24	9.9	53.7	NA
		SPECIFICATIONS				
		Model Number	Condenser	Amperage	Min. Circuit Ampacity	Shipping Weight
		AM-50BAE(-AD)	Air-Cooled	3.4	15	99 lbs.*

Optional: Auxiliary Drain Pump

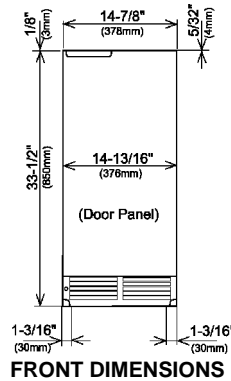
*Without pallet



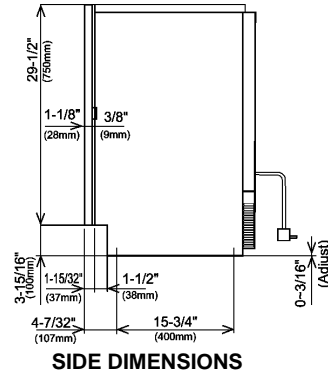
TOP DIMENSIONS



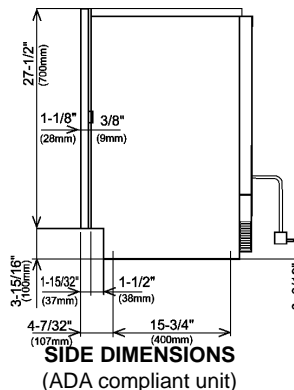
BACK DIMENSIONS



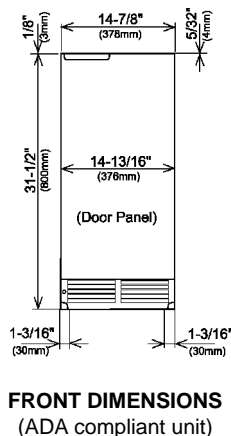
FRONT DIMENSIONS



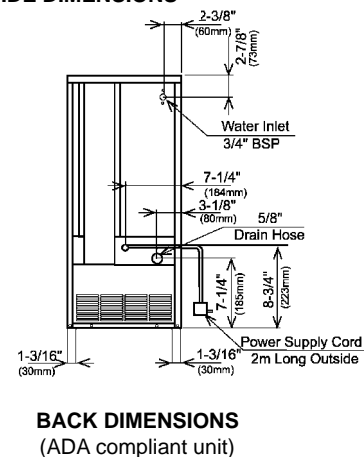
SIDE DIMENSIONS



SIDE DIMENSIONS (ADA compliant unit)



FRONT DIMENSIONS (ADA compliant unit)



BACK DIMENSIONS (ADA compliant unit)

© HOSHIZAKI AMERICA, INC. We reserve the right to change specifications without notice.

Printed in U.S.A.